

A Novel Core Fucose-specific Lectin from the Mushroom *Pholiota squarrosa*^S

Received for publication, April 5, 2012, and in revised form, August 4, 2012. Published, JBC Papers in Press, August 7, 2012, DOI 10.1074/jbc.M111.327692

Yuka Kobayashi^{†1}, Hiroaki Tateno^S, Hideo Dohra[¶], Kenta Moriwaki^{||}, Eiji Miyoshi^{||}, Jun Hirabayashi^S, and Hirokazu Kawagishi^{***†2}

From the [†]J-Oil Mills, Inc., 11, Kagetoricho, Totsuka-ku, Yokohama, Kanagawa 245-0064, Japan, ^SResearch Center for Medical Glycoscience, National Institute of Advanced Industrial Science and Technology, Central 2, 1-1-1 Umezono, Ibaraki 305-8568, Japan, [¶]Institute for Genetic Research and Biotechnology, ^{**}Graduate School of Science and Technology, and ^{††}Department of Applied Biological Chemistry, Faculty of Agriculture, Shizuoka University, 836 Ohya, Suruga-ku, Shizuoka 422-8529, Japan, and the ^{||}Department of Molecular Biochemistry and Clinical Investigation, Osaka University Graduate School of Medicine, 1-7, Yamada-oka, Suita, Osaka 565-0871, Japan

Background: Fuc- α 1–6 oligosaccharide has a variety of biological functions.

Results: Purification of a novel Fuc α 1–6-specific lectin from the mushroom *Pholiota squarrosa*.

Conclusion: The lectin binds only to core α 1–6-fucosylated *N*-glycans and not to the other types of fucosylated oligosaccharides.

Significance: The lectin will be a promising tool for analyzing the biological functions of α 1–6 fucosylation.

Fuc α 1–6 oligosaccharide has a variety of biological functions and serves as a biomarker for hepatocellular carcinoma because of the elevated presence of fucosylated α -fetoprotein (AFP) in this type of cancer. In this study we purified a novel Fuc α 1–6-specific lectin from the mushroom *Pholiota squarrosa* by ion-exchange chromatography and affinity chromatography on thyroglobulin-agarose. The purified lectin was designated as PhoSL (*P. squarrosa* lectin). SDS-PAGE, MALDI-TOF mass spectrometry, and N-terminal amino acid sequencing indicate that PhoSL has a molecular mass of 4.5 kDa and consists of 40 amino acids (NH₂-APVPVTKLVCDGDTYKCTAYLDFGDGRWVAQWDT-NVFHTG-OH). Isoelectric focusing of the lectin showed bands near pI 4.0. The lectin activity was stable between pH 2.0 and 11.0 and at temperatures ranging from 0 to 100 °C for incubation times of 30 min. When PhoSL was investigated with frontal affinity chromatography using 132 pyridylaminated oligosaccharides, it was found that the lectin binds only to core α 1–6-fucosylated *N*-glycans and not to other types of fucosylated oligosaccharides, such as α 1–2-, α 1–3-, and α 1–4-fucosylated glycans. Furthermore, PhoSL bound to α 1–6-fucosylated AFP but not to non-fucosylated AFP. In addition, PhoSL was able to demonstrate the differential expression of α 1–6 fucosylation between primary and metastatic colon cancer tissues. Thus, PhoSL will be a promising tool for analyzing the biological functions of α 1–6 fucosylation and evaluating Fuc α 1–6 oligosaccharides as cancer biomarkers.

Fucose is a monosaccharide that is found on glycoproteins and glycolipids in vertebrates, invertebrates, plants, and microorganisms. Fucosylation comprises the transfer of a fucose res-

idue to oligosaccharides and glycoproteins and is one of the most important oligosaccharide modifications involved in cancer and inflammation (1). Fucosylation is divided into several types, including α 1–2, α 1–3, α 1–4, and α 1–6 fucosylation. Among them, α 1–6 fucosylation, which is referred to as core fucosylation, is a cancer biomarker for hepatocellular carcinoma (HCC)³ because of the elevated presence of α 1–6-fucosylated AFP (AFP-L3) in this type of cancer. The α 1–6 fucosylation of glycoproteins is catalyzed by α 1–6 fucosyltransferase (FucT8), which transfers an L-fucose residue to the reducing terminal *N*-acetylglucosamine on *N*-glycans via an α 1–6-linkage (2). This oligosaccharide structure can be detected by lectin affinity electrophoresis using *Lens culinaris* agglutinin (LCA), which has an affinity to core-fucosylated mono- and bi-antennary *N*-glycans (3–5). Therefore, the detection of AFP-L3 by this method has been clinically used to make a differential diagnosis of HCC from liver cirrhosis (6–8). LCA can be used for affinity chromatography, but using it for lectin blot analysis to evaluate cellular fucosylation can be difficult because of its low sugar binding specificity. Conventionally, in addition to LCA, other commercially available core fucose-binding lectins, such as *Pisum sativum* agglutinin (9), *Aleuria aurantia* lectin (AAL) (10–13), *Narcissus pseudonarcissus* agglutinin, *Vicia faba* agglutinin (14–16), and *Aspergillus oryzae* lectin (12, 17, 18) have been used in studies on glycobiology. However, most fucose-binding lectins recognize any type of fucosylation, and LCA binds not only to fucose but also to mannose residues in *N*-glycans (3).

A. oryzae lectin has been reported to be α 1–6 fucose-specific but in fact also binds α 1–2 fucose residues in lectin microarrays and in lectin frontal chromatography (12). Therefore, there is a

^SThis article contains supplemental Fig. S1–S5.

¹To whom correspondence may be addressed. Tel.: 81-45-852-4001; Fax: 81-45-852-6357; E-mail: yuka.kobayashi@j-oil.com.

²To whom correspondence may be addressed. Tel.: and Fax: 81-54-238-4885; E-mail: achkawa@ipc.shizuoka.ac.jp.

³The abbreviations used are: HCC, hepatocellular carcinoma; PhoSL, *P. squarrosa* lectin; LCA, *Lens culinaris* agglutinin; AAL, *A. aurantia* lectin; RSL, *R. stolonifer* lectin; PA, pyridylaminated; FAC, frontal affinity chromatography; AFP, α -fetoprotein; AFP-L3, α 1–6-fucosylated fetoprotein; Bt, effective ligand constant based on concentration dependence analysis.

Core Fucose-specific Lectin from *P. squarrosa*

real need for novel α 1–6 fucose-binding lectins with a strict binding specificity.

In the course of our continued screening for new mushroom lectins (20, 21),⁴ we found lectin activity for core fucose in the extracts of the mushroom *Pholiota squarrosa* and succeeded in the purification of a core fucose-binding lectin from the mushroom. Here, we describe the isolation, characterization, and biological activity of this core fucose-binding lectin.

EXPERIMENTAL PROCEDURES

Materials—Fruiting bodies of *P. squarrosa* were collected from Tochigi, Fukushima, and Miyagi prefectures, Japan, and identified by HyphaGenesis Inc. (MEX-1083). The fruiting bodies were frozen upon collection and stored at -20°C . DEAE-Sepharose Fast Flow was purchased from GE Healthcare. Butyl-Toyopearl and TSK-GEL G3000SWXL were purchased from Tosoh (Tokyo, Japan). MALDI-TOF mass spectra were acquired on an AutoFlex mass spectrometer (Bruker Daltonics Inc., Billerica, MA). Erythrocytes were products of Nippon Biotest Laboratories Inc. (Tokyo, Japan) and Biotest AG (Dreieich, Germany). All of the sugars and glycoproteins used for the hemagglutinating inhibition tests and ELISA were purchased from Nacalai Tesque (Kyoto, Japan), Wako Pure Chemical Industries, Ltd. (Osaka, Japan), Calbiochem, and Sigma. Pyridylaminated (PA) oligosaccharides for frontal affinity chromatography (FAC) analysis were purchased from Takara Bio Inc. (Shiga, Japan) and Masuda Chemical Industries Co., Ltd. (Kagawa, Japan). HiTrap NHS-activated Sepharose was purchased from GE Healthcare. Stainless steel empty miniature columns (inner diameter, 2 mm; length, 10 mm; bed volume, $31.4\ \mu\text{l}$) were obtained from Shimadzu Co. (Kyoto, Japan). The Huh-7D12 cell line was purchased from DS Pharma Biomedical Co., Ltd. (Osaka, Japan). AFP from human cord serum was a product of SCIPAC Ltd. (Sittingbourne, UK). *N*-Glycosidase F was purchased from Roche Applied Science. Human serum samples for the study were prepared by KAC Co., Ltd. (Kyoto, Japan) with informed consent from the patients. The *L. culinaris* agglutinin lectin affinity HPLC column (LA-LCA, $0.46 \times 15\ \text{cm}$), biotinylated LCA, and biotinylated AAL were products of J-Oil mills, Inc. (Tokyo, Japan).

Preparation of Affinity Adsorbent—Thyroglobulin and anti-human AFP antibody NB-011 (Nippon Biotest Laboratory, Inc.) were conjugated to HiTrap NHS-activated Sepharose according to the manufacturer's protocols.

Purification of PhoSL—All of the procedures were carried out at 4°C . After defrosting, the fruiting bodies of *P. squarrosa* were homogenized and then extracted overnight with 10 mM Tris-HCl buffer (pH 7.2) containing 0.1% (v/v) sodium sulfite. The homogenate was centrifuged at $8500 \times g$ for 20 min, and the resultant supernatant was applied to a DEAE-Sepharose column ($2.5 \times 5\ \text{cm}$) equilibrated with the same buffer. After unbound materials were washed with the buffer, the bound fraction was desorbed with a linear gradient elution of NaCl (0, 0.05, 0.1, 0.2, 0.5, and 1 M) in the same buffer. The lectin-containing fraction eluted with 0.2 M NaCl was concentrated by ultrafiltration and lyophilized. The lyophilized fraction was

redissolved in PBS and applied to a column of thyroglobulin-agarose ($2.5 \times 15\ \text{cm}$) equilibrated with PBS. The column was exhaustively washed with the same buffer, and the adsorbed lectin was desorbed with 0.2 M ammonia. The eluate was immediately neutralized with 1 M HCl, dialyzed extensively against distilled water, and lyophilized. Approximately 2.7 mg of PhoSL was obtained from 100 g of the fresh fruiting bodies.

SDS-PAGE—SDS-PAGE (PhastGel Gradient 10–15 and Highdensity) was performed according to the method of Laemmli (22). Samples were heated in the presence or absence of 2-mercaptoethanol for 5 min at 100°C . Gels were stained with Coomassie Brilliant Blue. The molecular mass standards, XL-Ladder Broad (APRO life Science Institute, Inc., Tokushima, Japan) and smart peptide protein standard (GenScript USA Inc. Piscataway, NJ), were used. Gels were also stained with Glyco-protein Staining kit and GelCode Phosphoprotein Staining kit (Thermo Fisher Scientific Inc., Waltham, MA) for glycosylated and phosphorylated proteins, respectively.

Gel Filtration for Estimation of Molecular Mass—Gel filtration by HPLC was carried out on a TSK-gel G3000SWXL column ($7.8 \times 300\ \text{mm}$) at 25°C in 20 mM phosphate buffer (pH 7.4) containing 20% acetonitrile at a flow rate of 0.5 ml/min. Fractions were collected by monitoring the absorbance at 280 nm. The molecular mass was calibrated with standard proteins (Sigma).

Isoelectric Focusing—Isoelectric focusing was performed on a PhastGel IEF gel (pH 3–9) using Phastsystem (GE Healthcare). The pI standards were purchased from GE Healthcare.

N-terminal Sequence Analysis—The N-terminal amino acid of the intact protein was analyzed on a PPSQ-21A protein peptide sequencer (Shimadzu).

Bioinformatics Analysis—A sequence homology search was performed using the BLAST program (www.ncbi.nlm.nih.gov).

Peptide Synthesis—A peptide possessing the sequence determined by N-terminal sequence analysis ($\text{NH}_2\text{-APVPVTKLVCD-GDTYKCTAYLDFGDGRWVAQWDTNVFHTG-OH}$) was synthesized chemically by Toray Research Center (Tokyo, Japan). The crude synthesized peptide was purified by reverse-phase HPLC using an ODS column (Wakosil-II 5C18HG, $2 \times 25\ \text{cm}$) (Wako Pure Chemical Industries) with a linear gradient of 10–90% CH_3CN , 0.05% trifluoroacetic acid in H_2O at a flow rate of 1 ml/min. The effluent was monitored at 215 nm. The solvent was removed by evaporation at room temperature, leaving behind the peptide as a residual powder.

Thermostability, pH Stability, and Metal Cation Requirements—The thermostability and pH stability of the lectin were examined as described previously (23–26). Briefly, samples in PBS (0.1 mg/ml) were heated for 30 min at 4, 30, 40, 50, 60, 70, 80, or 100°C , cooled on ice, and titrated. In addition, the samples in PBS were heated for 0.5, 1, 2, 3, 6, or 12 h at 4, 60, 80, or 100°C , cooled on ice, and titrated. The pH stability of the lectin was measured by incubating the samples in different buffers (0.1 mg/ml) for 12 h at 4°C , dialyzed against PBS, and titrated in PBS. The following buffers were used: 50 mM glycine-HCl buffer (pH 2.0, 3.0), 50 mM sodium acetate buffer (pH 4.0, 5.0), 50 mM sodium phosphate buffer (pH 6.0, 7.0), 50 mM Tris-HCl buffer (pH 8.0), and 50 mM glycine-NaOH buffer (pH 9.0–11.0). To examine the metal cation requirements for hemagglutina-

⁴Y. Kobayashi and H. Kawagishi, unpublished data.

tion by the lectin, the sample (0.1 mg/ml) was incubated in 10 mM EDTA for 1 h at room temperature, dialyzed against PBS, and titrated. Afterward, 0.1 M metal cation (CaCl₂, FeCl₂, MgCl₂, MnCl₂, or ZnCl₂) was added to the demetalized lectin, and the solution was incubated for 1 h at room temperature and titrated.

Solubility—The solubility of the lectins, PhoSL and LCA, was measured by incubating each sample in various buffers (1 mg/ml) for 12 h at 4 °C, monitoring absorbance at 280 nm, and titrating in PBS. The following buffers were used: PBS, 10 mM Tris-HCl buffer (pH 7.4), 10 mM sodium phosphate buffer (pH 7.4), 10 mM potassium phosphate buffer (pH 7.4), 10 mM sodium citrate buffer (pH 7.4), and 50 mM Veronal buffer (pH 8.6).

Hemagglutination and Inhibition Assay—The hemagglutinating activity of lectin was determined using a 2-fold serial dilution procedure using intact erythrocytes. Briefly, 20 μl of a lectin-containing solution was added to the far left wells of a 96-well microtiter plate with U-shaped wells (Greiner), and a 2-fold serial dilution in PBS was made down the plate. Thereafter, 20 μl of a 3% solution of erythrocytes was added to each well, and hemagglutination was allowed to proceed for 1 h at room temperature. The hemagglutination titer was determined as the reciprocal of the highest dilution in which hemagglutination was observed. Results were interpreted as follows: tight button = negative; spread red blood cells = positive.

Inhibition was expressed as the minimum concentration of each sugar or glycoprotein required to inhibit hemagglutination of titer 4 of the lectin using rabbit erythrocytes. Briefly, 10 μl concentrations of each sugar- or glycoprotein-containing solution was added to the wells of a 96-well microtiter plate with U-shaped wells (Greiner), and a 2-fold serial dilution in PBS was made down the plate. Next, 10 μl of titer 4 of the lectin dissolved in PBS was added to each well, and the reaction was allowed to proceed for 1 h at room temperature. 20 μl of a 3% solution of erythrocytes was added to each well, and hemagglutination was allowed to proceed for 1 h at room temperature. The hemagglutination inhibitory concentration of each sugar was expressed as the reciprocal of the highest dilution in which inhibition of hemagglutination was observed.

FAC Analysis—The principle and protocol of FAC analysis have been described previously (27–29). Briefly, the lectin and the peptide were each dissolved in 0.2 M NaHCO₃ containing 0.5 M NaCl (pH 8.3) and coupled to a HiTrap *N*-hydroxysuccinimide-activated Sepharose. After washing and deactivation of excess active groups by 0.5 M Tris containing 0.5 M NaCl (pH 8.3), the lectin- or peptide-immobilized Sepharose beads were suspended in 10 mM Tris-HCl buffer (pH 7.4) containing 0.8% NaCl (TBS); the slurry was packed into a stainless steel column (2.0 × 10 mm) and connected to the FAC-1 machine that had been specially designed and manufactured by Shimadzu. The amount of immobilized protein was determined by measuring the amount of uncoupled protein in the washing solutions by the method of Bradford (30). The flow rate and the column temperature were kept at 125 μl/min and 25 °C, respectively. After equilibration with TBS, an excess volume (0.3 ml) of PA-glycans (3.8 or 4.5 nM) was successively injected into the columns by an autosampling system. Elution of PA-glycans was

monitored by measuring fluorescence (excitation and emission wavelengths, 310 and 380 nm, respectively). The elution front relative to that of a standard oligosaccharide (PA-05, Manα1-3(Manα1-6)Manβ1-4GlcNAcβ1-4GlcNAc-PA), *i.e.* $V - V_0$, was then determined. V is the elution volume of each PA sugar. PA-05, which has no affinity to the lectin, was used for the determination of V_0 . For obtaining the effective ligand content (Bt) of each lectin column, concentration dependence analysis was performed using varying concentrations (0.5–10 μM) of PA402 (Masuda Chemicals, Takamatsu, Japan). Woolf-Hofstee plots were made using the $V - V_0$ values, and the Bt values were thus obtained. Next, using the Bt values for each lectin column, K_d values for a series of glycans were calculated from the equation $K_d = Bt/(V - V_0)$, if $K_d \gg [A]_0$. In this study binding affinity is discussed using an association constant (K_a), where K_a is the inverse of K_d ($K_a = 1/K_d$).

Cell Culture and Purification of AFP-L3—Huh7 cells were cultured in Dulbecco's modified Eagle's medium (Sigma) containing 10% fetal bovine serum (Invitrogen) and 1/100 penicillin-streptomycin solution (×100) (Wako Pure Chemical Industries) at 37 °C and 5% CO₂. The cultured supernatant was centrifuged at 8500 × *g* for 20 min and filtered. The resultant supernatant was applied to a column of anti-human AFP antibody NB-011 (Nippon Biotest Laboratories)-immobilized Sepharose (5 ml) equilibrated with PBS. After unbound materials were washed with the buffer, the bound fraction was desorbed with 0.1 M glycine-HCl buffer (pH 3.0). The eluant was immediately neutralized with 1 M Tris-HCl (pH 9.0). The fractions were concentrated and applied to an LA-LCA column (0.46 × 15 cm) equilibrated with 50 mM Tris-H₂SO₄ (pH 7.2). The column was exhaustively washed with the same buffer, and the adsorbed AFP was eluted by a linear gradient of methyl α-mannoside (0 to 0.2 M) in the buffer. The eluant was dialyzed extensively against distilled water, ultrafiltered, and concentrated.

Deglycosylation of the Anti-human AFP Antibody—Anti-human AFP antibody NB-011 (150 μg) was incubated with 25 units of *N*-glycosidase F (Roche Applied Science) in a total volume of 1 ml of glycosidase reaction buffer (20 mM sodium phosphate buffer (pH 7.4) containing 0.5% *n*-octyl glucoside (Dojindo Laboratories, Kumamoto, Japan) for 24 h at 37 °C. The deglycosylated antibody was stored in aliquots at 4 °C with 0.1% sodium azide (31).

Biotinylation of Lectin—PhoSL was incubated with biotin amidocaproate *N*-hydroxysuccinimide ester (Sigma) in 0.1 M NaHCO₃ with haptenic sugar for 12 h at 4 °C and then desalted with Sephadex G-25 columns (GE Healthcare).

ELISA—Interaction between glycosylated proteins and L-Fuc-specific lectins was detected by ELISA. Ninety-six-well ELISA plates (Greiner Bio-One, Frickenhausen, Germany) were coated by adding 25 μl of each diluted protein or glycoprotein (100 ng/ml) in 0.1 M carbonate buffer (pH 9.5) per well, and the plates were then incubated overnight at 4 °C. Subsequently, the plates were blocked with PBS containing 1% bovine serum albumin (BSA) for 1.5 h at room temperature and then rinsed with wash buffer (PBS containing 0.05% Tween 20, pH 7.4) 3 times before the addition of each biotinylated lectin in blocking buffer (1 μg/ml). After incubation for 1 h at room temperature, the plates were washed 3 times before the addi-

Core Fucose-specific Lectin from *P. squarrosa*

tion of horseradish peroxidase-streptavidin (Vector Laboratories Inc., Burlingame, CA). After the plates were washed, 3,3',5,5'-tetramethylbenzine microwell peroxidase substrate system (KPL) was used for colorimetric analysis, and the absorbance was measured at 450 nm.

Human Serum Samples Information—Human serum samples for the study were prepared by KAC Co., Ltd., with informed consent from the patients. The normal volunteers were NV-1 (sample ID S018282, female, age 41), NV-2 (sample ID S01828, male, age 46), and NV-3 (sample ID S018290, male, age 29). The HCC patients were HCC-1 (sample ID S09119, male, age 71, Grade 00, TNM T3NxM0, Stage III, CEA 2.3, AFP 6.9), HCC-2 (sample ID S09069, male, age 44, Grade G3, TNM T1N0M0, Stage N/A, CEA N/A, AFP 956.31), and HCC-3 (sample ID S09227, male, age 50, Grade G2, TNM T3N0M0, Stage III, CEA 0.606, AFP 10.66). Human serum samples were pretreated with Proteome Purify™ 12 (R&D Systems, Inc. Minneapolis, MN).

Antibody-Lectin Sandwich Assay—Ninety-six-well ELISA plates were coated by adding 25 μ l of diluted deglycosylated antibody in 0.1 M carbonate buffer (pH 9.5) per well, and the plates were then incubated overnight at 4 °C. The next day the plates were blocked for 1.5 h at room temperature with 150 μ l of blocking buffer (PBS containing 1% BSA) and then rinsed with wash buffer (PBS containing 0.05% Tween 20, pH 7.4) 3 times. Each sample in the blocking buffer or the human serum samples was allowed to react for 1.5 h at 37 °C, and the plates were washed 3 times before the addition of each lectin in the blocking buffer (1 μ g/ml). After incubation for 1 h at room temperature, the plates were washed 3 times before the addition of horseradish peroxidase-streptavidin. After the plates were washed, 3,3',5,5'-tetramethylbenzine microwell peroxidase substrate system was used for colorimetric analysis, and the absorbance was measured at 450 nm.

Human Colon Cancer Array Analysis—Human colon cancer array slides carrying primary or metastatic colon cancers were obtained from KURABO Industries Ltd. (Osaka, Japan). In total, 124 colon cancer tissues, including 79 primary and 45 metastatic cancer tissues and 11 normal colon tissues, were subjected to immunohistochemical analysis. Tissue microarray slides were deparaffinized with xylene and ethanol. The slides were pretreated with avidin/biotin solution and then with peroxidase blocking reagent (DAKO, Carpinteria, CA). After washing twice with PBS, the slides were incubated in TBST (10 mM Tris-HCl buffer (pH 7.4) containing 0.8% NaCl and 0.05% Tween 20) containing 5% BSA at 4 °C overnight. Next, the slides were incubated with biotinylated AAL (5.0 μ g/ml) or PhoSL (50 μ g/ml) for 1 h at room temperature. The slides were then washed 3 times with PBS and incubated with the ABC kit (Vector Laboratories) for 30 min at room temperature. After washing 3 times with PBS, positive staining was visualized using diaminobenzidine (DAKO). Statistical analysis was performed using the χ^2 test.

RESULTS

Isolation and Molecular Properties of PhoSL—A lectin was purified from extracts of fruiting bodies of *P. squarrosa* using DEAE-Sepharose and affinity chromatography on thyroglobu-

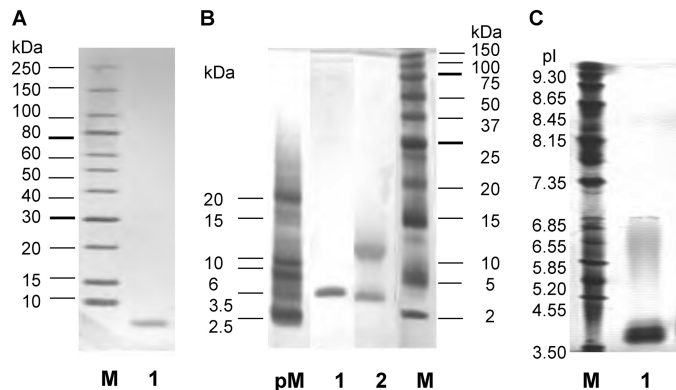


FIGURE 1. Characterization of PhoSL. A, shown is an SDS-PAGE linear gradient gel (10–15%). Lane M indicates marker proteins; lane 1, purified PhoSL under reducing conditions with 2-mercaptoethanol. B, shown is a high density SDS-PAGE gel. Lane pM indicates marker peptides; lane 1, purified PhoSL under reducing conditions with 2-mercaptoethanol; lane 2, purified PhoSL non-reduced; lane M, marker proteins. C, shown is isoelectric focusing of PhoSL. Lane M indicates marker proteins; lane 1, PhoSL.

lin-agarose. Because very little of the lectin activity was recovered from the affinity support (the thyroglobulin-agarose) by elution with the haptenic sugar, L-fucose, even at a concentration of 0.2 M, the lectin was eluted with 0.2 M ammonia. The purified lectin, designated as PhoSL, gave a band with a mass of 4.5 kDa on SDS-PAGE in the presence (Fig. 1A, lane 1, and B, lane 1) and two bands with masses of 4.5 and 14 kDa in the absence of 2-mercaptoethanol (Fig. 1B, lane 2). Isoelectric focusing gave a band near pI 4.0 (Fig. 1C). The use of assay kits for the detection of glycoproteins and phosphoproteins showed no significant bands on the membrane, suggesting that very low or undetectable levels of glycosylation and phosphorylation were present in the protein (data not shown). MALDI-TOF mass analysis of PhoSL yielded molecular ions from m/z 4,229 to 4,455 and small peaks at m/z 8,932 and 13,373 (data not shown). HPLC gel filtration of the intact lectin gave a peak at an elution volume corresponding to a molecular mass of 14 kDa (supplemental Fig. S2).

N-terminal Amino Acid Sequence Analysis—N-terminal amino acid sequence analysis of PhoSL gave the 40-amino acid sequence NH₂-APVPVTKLVCDDGTYKCTAYLDFGDGRWVAQWDTNVFHTG-OH (Fig. 2). The amino acid sequence of PhoSL was analyzed by the BLAST program, and the sequence showed homology to a lectin from *Rhizopus stolonifer* (RSL) (85%) (Fig. 2).

Stability of PhoSL—The lectin activity of PhoSL was extraordinarily stable over a wide range of temperatures between 4 and 100 °C at an incubation time of 30 min (Fig. 3A). The activity was also retained at 60 °C for 12 h and at 80 °C for 6 h (Fig. 3B). Half of the lectin activity was maintained even at 100 °C for 3 h (Fig. 3B). Similarly, the lectin activity was very stable over the wide range of tested pH values (pH 2.0–11.0) (Fig. 3C). Treatment with EDTA or the addition of the metal cations CaCl₂, FeCl₂, MgCl₂, MnCl₂, or ZnCl₂ did not produce any changes in the lectin activity. This result indicates that the lectin does not require metal ions for binding (date not shown). PhoSL was soluble in all the buffers used; however, LCA was soluble in 10 mM Tris-HCl buffer (pH 7.4), 10 mM sodium phosphate buffer (pH 7.4), and 50 mM Veronal buffer (pH 8.6) but not soluble in

PhoSL APVPVTKLVCDGDTYKCTA YLDFGDGR WVAQWDTNVFHTG 1–40aa
 RSL IDPVNVKLLQCDGDTYKCTA DLDFGDGR 1–28aa

FIGURE 2. **Multiple alignment of PhoSL and RSL.** The residues in the *first row* describe the amino acid sequence of PhoSL, and those in the *second row* describe the amino acid sequence of RSL. Shown in *gray shading* are the amino acid residues that are identical between PhoSL and RSL.

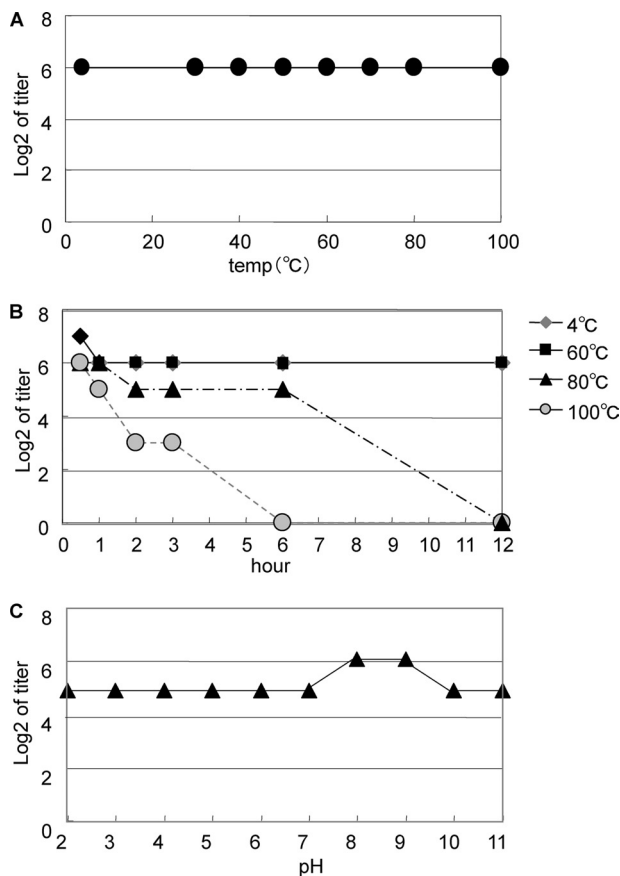


FIGURE 3. **The stability of PhoSL over a range of temperature and pHs.** The stability of PhoSL was investigated over a broad range of temperatures for 30 min (A), long incubation times for four different temperatures (B), and incubation in different pH buffers (C).

PBS, 10 mM potassium phosphate buffer (pH 7.4), or 10 mM sodium citrate buffer (pH 7.4) (data not shown).

Hemagglutination and Inhibition Assays—As shown in Table 1, PhoSL agglutinated intact erythrocytes from rabbit, horse, pig, goose, and guinea pig. As shown in Table 2, various monosaccharides, oligosaccharides, and glycopeptides were able to inhibit the hemagglutination activity of PhoSL. None of the mono- and oligosaccharides used bound to PhoSL. Among the tested glycoproteins, only IgG and thyroglobulin inhibited the hemagglutination activity of PhoSL. A peptide possessing the determined amino acid sequence was synthesized chemically. The synthetic peptide did not agglutinate intact rabbit erythrocytes (data not shown).

FAC Analysis of PhoSL—The detailed sugar binding specificity of PhoSL was also elucidated by FAC analysis. Among 132 kinds of PA-glycans used (supplemental Fig. S1), only the 21 glycans possessing the core α 1–6 fucose bound to the lectin (Fig. 4B). The B_t and K_d values were determined to be 0.09 nmol

TABLE 1
Agglutination profiles of PhoSL (0.5 mg/ml)

Group of erythrocytes	Titer ^a
Rabbit	2 ⁹
Sheep	NA ^b
Bovine	NA
Horse	2 ⁸
Pig	2 ⁸
Chicken	NA
Goose	2 ¹⁰
Guinea pig	2 ⁸
Human A	NA
Human B	NA
Human O	NA

^a The hemagglutination titer was defined as the reciprocal of the highest dilution exhibiting hemagglutination.

^b NA, not agglutinated.

TABLE 2
Inhibition of PhoSL-mediated hemagglutination by glycoproteins

Inhibitor ^a	MIC ^b
Thyroglobulin	$\mu\text{g/ml}$ 125
IgG	250

^a Glucose, galactose, mannose, fucose, L-fucose, xylose, L-rhamnose, GlcNAc, GalNAc, ManNAc, LacNAc, lactose, maltose, fructose, saccharose, melibiose, and raffinose did not inhibit at concentrations up to 0.2 M. N-Acetylneuraminic acid and N-glycolylneuraminic acid did not inhibit at concentrations up to 20 mM. Fetuin, asialo-fetuin, α 1-acid glycoprotein, transferrin, BSM, asialo-BSM, PSM, asialo-PSM, and albumin did not inhibit at concentrations up to 500 $\mu\text{g/ml}$.

^b Minimum inhibitor concentration required for inhibition of four hemagglutination dose of the lectin.

and 3.3×10^{-6} M, respectively, for the immobilized PhoSL (1 mg/ml) using PA-402 (Fig. 4A). The strength of affinity of each PA-glycan for the immobilized lectin is shown as a K_a value (M^{-1}) in Figs. 4B and 5B. Man α 1-3(Man α 1-6 Man β 1-4GlcNAc β (Fuca α 1-6)1-4GlcNAc-PA (PA-15, $K_a = 5.0 \times 10^{-5}$ M^{-1}) showed the strongest affinity to the immobilized lectin (Fig. 4B). The sialylated N-glycans \pm Neu5Ac α 2-3Gal β 1-4GlcNAc β 1-2Man α 1-3(Neu5Ac α 2-3Gal β 1-4GlcNAc β 1-2Man α 1-6)Man β 1-4GlcNAc β 1-4 (Fuca α 1-6) GlcNAc-PA (PA-601, $K_a = 2.4 \times 10^{-5}$ M^{-1} and 602, $K_a = 1.2 \times 10^{-5}$ M^{-1}) also bound to the lectin. In contrast, O-glycans having L-Fuc (PA-718 to PA-723, PA-726 to PA-731, PA-739, PA-909) or Fuca α 1–3 linkages (PA-419 and -420) did not show any significant affinity to the immobilized PhoSL.

The detailed oligosaccharide binding specificity of PhoSL was compared with that of LCA, which has been reported previously (Fig. 5) (3). For an easier understanding of the structural elements required for the recognition of PhoSL and LCA, the K_a values for a series of core-fucosylated glycans have been arranged in the order of affinity strength, and the core-fucosylated glycans have been represented using the “GRYP” code proposed in a previous report (3, 32). In this system the branch positions of N-glycans (GlcNAc) are numbered from I to VI according to the corresponding mammalian GlcNAc-transferases, and the nonreducing end sugars are shown in different colors: GlcNAc (blue), Gal (yellow), and NeuAc (purple). The presence of the core fucose (α 1–6Fuc) is emphasized with another box colored in red. Both PhoSL and LCA showed high specificity for mannose-type (PA-015), mono- (PA-201, -401, -402), and bi-antennary (PA-202, -203, -403, -404, -405, -406, -601, -602) N-glycans containing core fucose. PhoSL recognized not only mono- or biantennary oligosaccharides but also tri- or tetra-antennary oligosaccharides (PA-

Core Fucose-specific Lectin from *P. squarrosa*

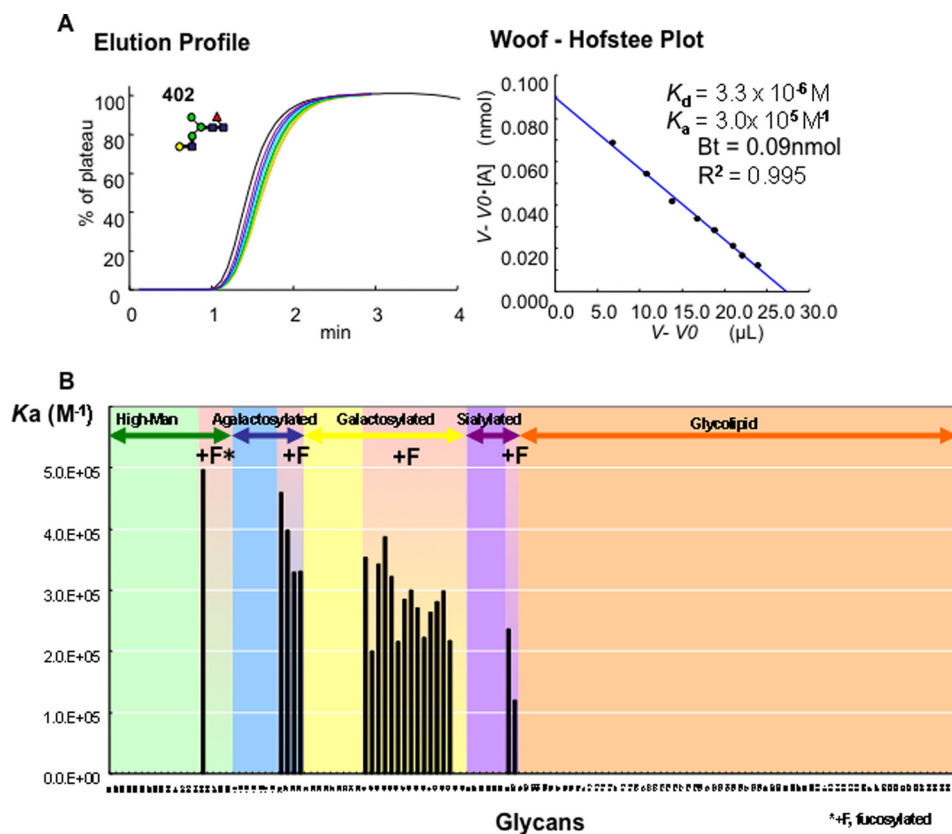


FIGURE 4. **FACS analysis of PhoSL.** *A*, shown is the elution pattern of several types of PA-oligosaccharides on the PhoSL-immobilized column. *B*, shown are association constants (K_a) values of the purified PhoSL to various types of PA-glycans.

015, -201–204, -401–411, -413, -601, -602) (Fig. 5*B*). However, LCA bound to only mono- and biantennary oligosaccharides (PA-015, -202, -203, -205, -401, -402, -403, -406, -601, -602). No binding of LCA to core-fucosylated tri- (PA-407, -408, -409, -410) and tetra-antennary (PA-411, -413, -415, -418) *N*-glycans was observed (Fig. 5*B*). The sugar binding specificity of the synthetic peptide was almost the same as that of PhoSL (supplemental Fig. S3).

ELISA of PhoSL—To compare the detailed carbohydrate binding specificity of PhoSL with that of LCA, we examined the binding of biotinylated lectins to immobilized proteins or glycoproteins using ELISA (Fig. 6). Each protein or glycoprotein was immobilized on the plates, and biotinylated PhoSL or LCA was used as the analyte. Among the major human serum glycoproteins (HSA, IgG, transferrin, fibrinogen, IgA, α 2-macroglobulin, IgM, α 1-antitrypsin, C3 (third components of complement), haptoglobin, and α 1-acid glycoprotein) tested, the most potent binding glycoproteins for PhoSL were IgA and IgG (Fig. 6*A*). Among the serum tumor markers (prostate specific antigen (PSA), AFP, AFP-L3) tested, PhoSL bound to fucosylated AFP (AFP-L3). Thyroglobulin (bovine) and lactoferrin (human milk) were also bound to PhoSL. All the glycoproteins that bound to PhoSL in the assay possessed the core fucose. Although the profile of LCA was similar to that of PhoSL, the binding to the glycoproteins was much weaker than that of PhoSL (Fig. 6*B*).

Antibody-Lectin Sandwich ELISA—The sugar binding specificity of PhoSL to fucosylated AFP (AFP-L3) obtained from the sera of three patients with HCC (HCC-1–3) was further inves-

tigated by antibody-lectin sandwich ELISA (Fig. 7). Before the ELISA, the existence of AFP-L3 in the serum samples was confirmed by the conventional method, lectin affinity electrophoresis, using LCA. All the samples contained AFP-L3 (supplemental Fig. S4). In the antibody-lectin sandwich ELISA, *N*-glycosidase F-treated anti-AFP antibody was immobilized on the plate, as IgG has fucosylated oligosaccharides in its Fc site (fragment, crystallizable site of antibody). AFP from the three patients (HCC-1 to HCC-3) and 3 volunteers (NV-1 to NV-3) was detected by anti-AFP (Fig. 7*A*). Both PhoSL and LCA bound to the AFP in a dose-dependent manner (Fig. 7, *B* and *C*).

Application of PhoSL to Histochemistry—To demonstrate the utility of PhoSL in the immunohistochemical analysis of human cancer tissues, 124 colon cancer tissues, including primary and metastatic colon cancers, on tissue arrays were stained with biotinylated PhoSL and AAL. AAL is a lectin from *A. aurantia* that binds to all types of fucosyl linkage. Staining intensities were classified into 4 groups: negative staining (0), low staining intensity (1), medial staining intensity (2), and high staining intensity (3). A representative tissue from each group is shown in supplemental Fig. S5. Representative images of normal colon, primary cancer, and metastatic cancer are shown in Fig. 8*A*. Normal colon mucosa was stained with AAL, but not PhoSL, because of abundant mucin, which carries α 1–3/4 fucosylated glycans on *O*-glycans, suggesting that PhoSL does not bind to α 1–3/4 fucosylated glycans (Fig. 8, *A* and *B*). As shown in Fig. 8, *C* and *D*, both AAL and PhoSL bound to primary colon cancer tissue at a similar intensity. In contrast, only AAL, but

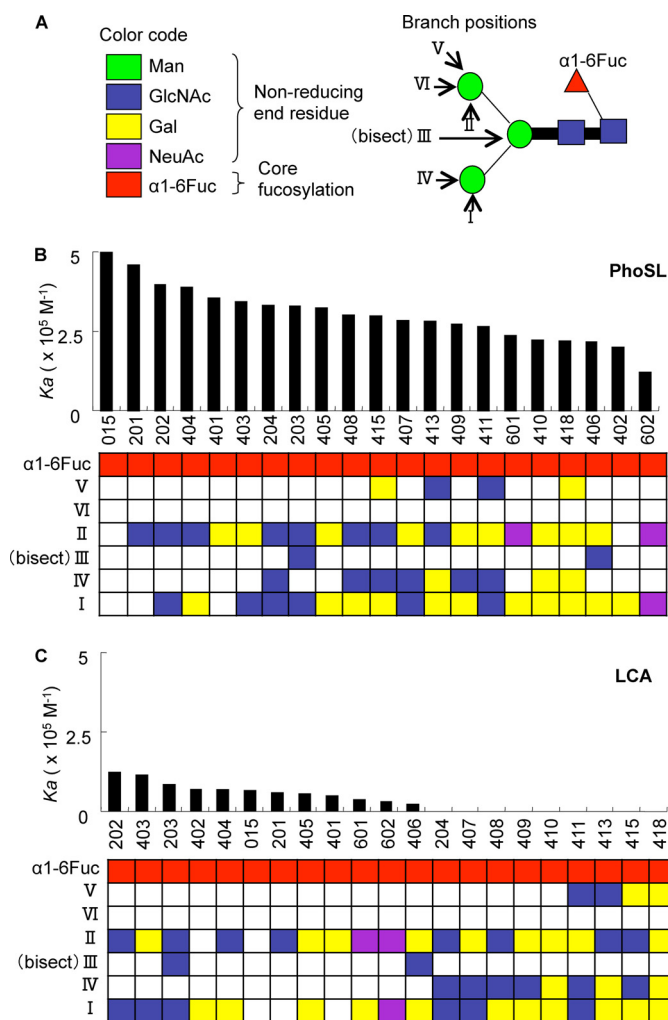


FIGURE 5. Comparative analysis of glycan binding specificity of PhoSL and LCA by the GRYP code. **A**, shown are definitions of the GRYP code for representing the branch positions and non-reducing end residues. The non-reducing end sugars and the core fucose are shown in different colors in the left panel. Each branch is numbered from I to VI corresponding to GlcNAc transferases, as shown in the middle panel. **B**, shown are bar graph representations of the association constants (K_a) of PhoSL toward core-fucosylated *N*-glycans. Numbers at the bottom of the bar graphs correspond to the sugar numbers indicated in supplemental Fig. S2. **C**, shown are bar graph representations of the association constants (K_a) of LCA.

not PhoSL, bound to metastatic colon cancer tissue (Fig. 8, *E* and *F*). The staining intensities of all tissues examined in this study are summarized in Table 3. Approximately 70% of the primary and metastatic cancer tissues were classified into a high intensity group after AAL staining (Fig. 8, *G* and *H*, and Table 3). No difference in AAL staining intensity was observed between primary and metastatic cancer tissues. In contrast, PhoSL exhibited a significantly lower binding capacity to the metastatic cancer tissues than the primary tissues (Fig. 8, *G* and *H*, and Table 3). Only 25% of the metastatic tissues showed medial and strong intensities (group 2 and 3) after PhoSL staining despite the fact that 84% of these tissues were stained with AAL.

DISCUSSION

PhoSL was purified from the edible mushroom *P. squarrosa*. The lectin gave a band with a mass of 4.5 kDa on SDS-PAGE in

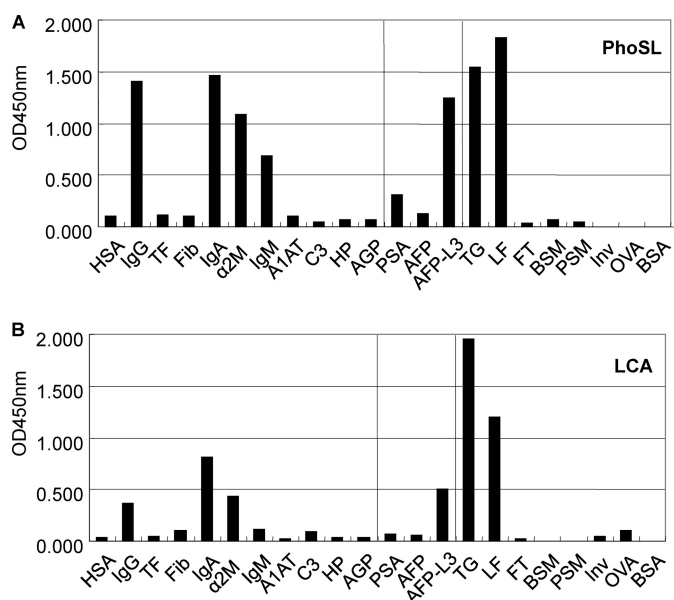


FIGURE 6. Binding of PhoSL and LCA to immobilized glycoproteins by ELISA. **A**, shown is binding activity of biotin-labeled PhoSL and various immobilized glycoproteins. **B**, shown is binding activity of biotin-labeled LCA and various immobilized glycoproteins. The immobilized glycoproteins are: HSA, human serum albumin; Fib, fibrinogen; IgA, immunoglobulin A; α 2M, α 2-macroglobulin; A1AT, α 1-antitrypsin; C3, third component of complement; HP, haptoglobin; AGP, α 1-acid glycoprotein; PSA, prostate specific antigen; AFP-L3, 1-6-fucosylated fetoprotein; LF, lactoferrin; FT, fetuin; BSM, bovine submaxillary gland mucin; PSM, porcine stomach mucin; Inv, invertase; OVA, ovalbumin.

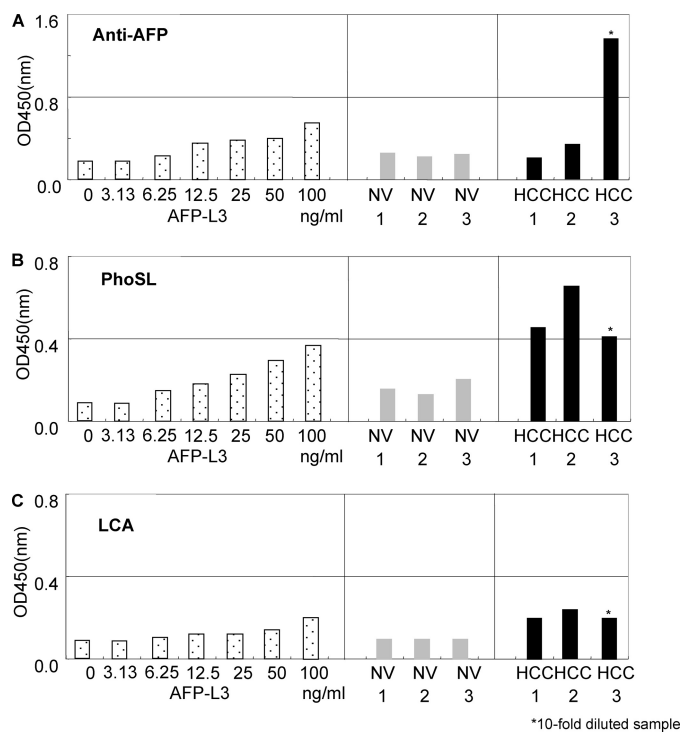


FIGURE 7. Antibody-lectin sandwich ELISA using purified AFP-L3 and the sera of HCC patients and normal volunteers. ELISA with Anti-AFP (**A**), PhoSL (**B**), and LCA (**C**).

the presence (Fig. 1, *A*, lane 1, and *B*, lane 1) and two bands with masses of 4.5 and 14 kDa in the absence of 2-mercaptoethanol (Fig. 1*B*, lane 2). Its primary structure consisted of 40 amino acids, as determined by N-terminal amino acid sequence anal-

Core Fucose-specific Lectin from *P. squarrosa*

ysis. The synthetic PhoSL peptide corresponding to the determined sequence exhibited identical binding specificity to native PhoSL in FAC analysis (supplemental Fig. S2) but did not exhibit hemagglutination activity. HPLC gel filtration of the intact lectin gave a peak at an elution volume corresponding to a molecular mass of 14 kDa. PhoSL possessed no sugar chains or phosphate groups. All the results mentioned above indicated that PhoSL is composed of three or four 4.5-kDa subunits with S-S linkage and exhibits true polyvalent binding during agglu-

tion of erythrocytes and/or precipitation of appropriate cell surface polysaccharides, but the oligomeric form is not necessarily in direct binding assays (FAC analysis, ELISA, etc.).

The BLAST search revealed that PhoSL has 85% sequence homology (22/26 amino acids) with the α 1-6-linked fucose-specific lectin from *R. stolonifer*. RSL has also been isolated as a core fucose-specific lectin. RSL has high affinity toward saccharides with α 1-6Fuc and weak affinity toward saccharides with α 1-2Fuc, α 1-3Fuc, and α 1-4Fuc (33).

The unique property of PhoSL is its strict sugar binding specificity to α 1-6Fuc (Fig. 4B). α 1-6 fucosylation is one of the most important oligosaccharide modifications in carcinogenesis; however, although many studies related to fucosylation have been conducted, they have not completely clarified the difference between α 1-2, α 1-3, or α 1-4 fucosylation and α 1-6 fucosylation. A hindrance to this clarification has been the lack of a tool for the specific detection of α 1-6 fucosyl linkage; AAL, which is used in many studies, recognizes all types of fucosyl linkages (13, 17).

The FAC results indicate that PhoSL recognizes α 1-6 fucosyl linkages exclusively, that all the α 1-6 oligosaccharides were bound to the lectin, and that LCA could not bind to some α 1-6 oligosaccharides (Figs. 4 and 5). In addition, the K_a value of PhoSL was $3.2 \times 10^5 \text{ M}^{-1}$ for the fully galactosylated, biantennary *N*-glycan with a core fucose (PA-405), which is the major *N*-glycan in AFP-L3 from Huh7 cells and HCC patients (Fig. 4B) (34). On the other hand, the K_a value of the binding between LCA and PA-405 was $4.7 \times 10^4 \text{ M}^{-1}$ (3). The affinity of PhoSL toward the oligosaccharide was higher than that of LCA. Furthermore, LCA also bound to non-fucosylated, high mannose-type *N*-glycans. For example, LCA showed affinity for a larger high mannose-type *N*-glycan, Man8 (Man α 1-2Man α 1-2Man α 1-3 (Man α 1-2Man α 1-6 (Man α 1-3) Man α 1-6) Man β 1-4GlcNAc β 1-4 (Fuc α 1-6) GlcNAc-PA, PA-012), with a K_a of $2.5 \times 10^4 \text{ M}^{-1}$ (3). LCA is now the only commercially available diagnostic agent that can detect α 1-6 fucosyl-linked sugar chains specifically.

The superiority of PhoSL over LCA was confirmed by ELISA using biotin-labeled PhoSL and LCA and immobilized glycoproteins. Although the specificity of both lectins showed similar tendencies, the binding strength of PhoSL to the α 1-6-fucosylated glycoproteins was greater than that of LCA (Fig. 6).

The promising potential of PhoSL as a diagnostic agent was also shown by antibody-lectin sandwich ELISA using AFP-L3 and the partially purified AFP from the sera of HCC patients and normal volunteers (NV) (Fig. 7). The sensitivity and selectivity of PhoSL to AFP-L3 in the sera of HCCs and normal volunteers were much greater than those of LCA and even anti-AFP (Fig.

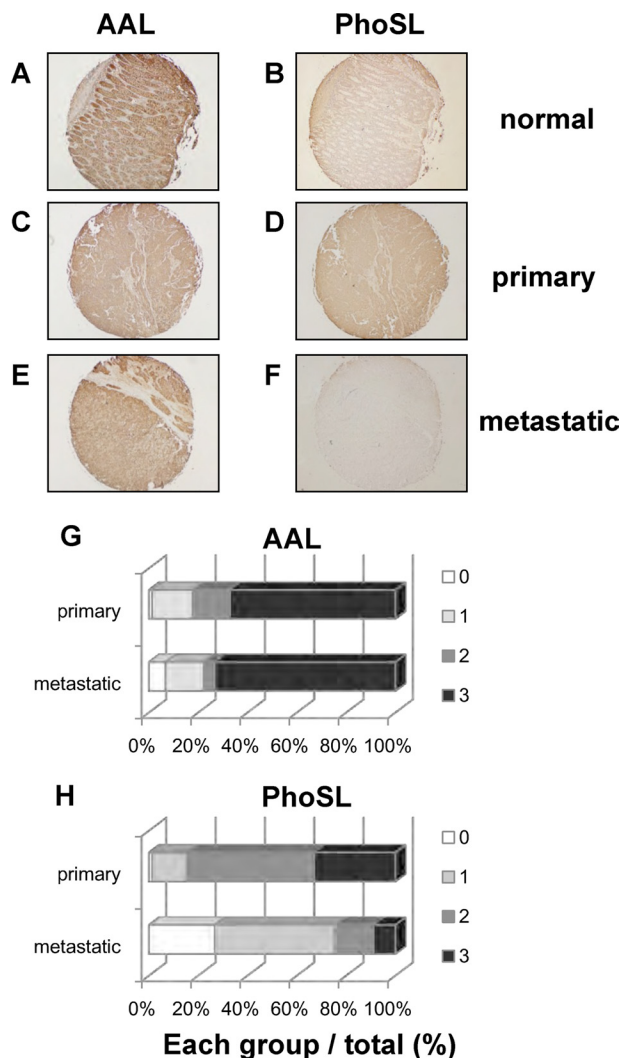


FIGURE 8. Immunohistochemical analysis of human colon cancer tissues with PhoSL and AAL. Human colon cancer tissue arrays comprising normal colon tissues (A and B), primary colon cancers (C and D), and metastatic colon cancers (E and F) were subjected to immunohistochemical analysis with PhoSL and AAL. G and H show the ratio of the numbers in each staining-intensity group to the total number is shown.

TABLE 3
Staining intensities of AAL and PhoSL in human colon cancer tissue analyses

Staining intensity	AAL ^a			PhoSL ^b		
	Normal	Primary	Metastatic	Normal	Primary	Metastatic
0	0	1 (1.3%)	3 (6.7%)	7	1 (1.3%)	12 (26.7%)
1	0	13 (16.5%)	7 (15.6%)	4	11 (13.9%)	22 (48.9%)
2	5	12 (15.2%)	2 (4.4%)	0	41 (51.9%)	7 (15.6%)
3	6	53 (67.1%)	33 (73.3%)	0	26 (32.9%)	4 (8.9%)
Total	11	79	45	11	79	45

^a not significant.

^b $p < 0.01$, compared between primary and metastatic cancers (χ^2 test).

7). AFP is a biomarker that was discovered in 1963 by Abelev (35) and belongs to the albumin-like superfamily. This protein, whose molecular mass is 65 kDa, consists of 590 amino acids and has a biantennary sugar chain at Asn²³² (36). A variety of sugar chains are on the protein, and AFP-L3 is one of them. The structure of AFP-L3 has been determined to be GlcNAc β 1-2Man α 1-3 (Gal β 1-4GlcNAc β 1-2Man α 1-6)Man β 1-4GlcNAc β 1-4 (Fuc α 1-6) GlcNAc-AFP by lentil lectin affinity electrophoresis. Because slightly increased serum concentrations of total AFP have been observed in patients with chronic hepatitis and liver cirrhosis, conditions that are known to be associated with pre-malignant HCC lesions, a wide overlap in total AFP has been observed between HCC and such benign liver diseases. The sera of patients with HCC are known to contain relatively large amounts of AFP-L3. Therefore, AFP-L3 has been recognized as a specific marker for HCC. Furthermore, analysis using this marker could be useful for monitoring treatment responses and disease recurrence and could also be a tool for recognition of HCC earlier than that possible by using imaging modalities (34, 37–42). In recent years, in addition to AFP, new biomarkers possessing fucosides have been discovered. For example, Golgi protein 73 (GP73) content in the blood of patients with HCC was found to be elevated, and the protein was α 1–6-hyperfucosylated (43–46). In addition, patients with liver cirrhosis and liver cancer had increased levels of triantennary glycan containing outer arm (α 1–3)-fucosylation in α -antitrypsin in the blood, but increases in core (α 1–6)-fucosylation were observed only on α 1-antitrypsin from patients with liver cancer (47). Physiological functions of the core fucose has been investigated recently. The lack of core fucosylation of transforming growth factor- β 1 receptors induces severe growth retardation and death during postnatal development (48, 49). Mutations of the GDP-mannose-4,6-dehydratase gene that plays a pivotal role in fucosylation in human colon cancer resulted in resistance to TRAIL-induced apoptosis followed by escape from immune surveillance. This pathway by GDP-mannose-4,6-dehydratase mutation could be a novel type of cancer progression through cellular fucosylation and natural killer cell-mediated tumor surveillance. However the cellular fucosylation type has not been determined yet (50, 51).

Fig. 8 shows that AAL bound to both primary and metastatic colon cancer tissues with a similar intensity. However, PhoSL bound to the primary colon cancer tissues more strongly than it did to the metastatic tissues. These results suggest that in some cases α 1–6 fucosylation is increased in the early phase of colon cancer development and subsequently decreased in the metastatic phase. The decreased expression of α 1–6 fucosylation in metastatic cancer tissues may be responsible for the escape of cancer cells from natural killer cell-mediated tumor surveillance. The mechanism and meaning underlying the decreased expression of α 1–6 fucosylation in metastatic cancer tissues should be revealed in a future study. PhoSL, the lectin characterized in this study, may be useful for the detection of AFP-L3 and other new biomarkers and for determining the physiological functions of oligosaccharides (19).

In summary, PhoSL very strongly and specifically binds to Fuc α -oligosaccharides. Moreover, it is highly stable over a wide range of pHs and temperatures and is highly soluble in various

buffers. These advantages indicate that PhoSL can become a powerful tool to analyze biological functions of core fucoses and serve as a diagnostic agent in the near future.

REFERENCES

- Miyoshi, E., Moriwaki, K., and Nakagawa, T. (2008) Biological function of fucosylation in cancer biology. *J. Biochem.* **143**, 725–729
- Uozumi N, Yanagidani S, Miyoshi E, Ihara Y, Sakuma T, Gao CX, Teshima T, Fujii S, Shiba T, and Taniguchi, N. (1996) Purification and cDNA cloning of porcine brain GDP-L-Fuc:N-acetyl- β -D-glucosaminide α 1 \rightarrow 6fucosyltransferase. *J. Biol. Chem.* **271**, 27810–27817
- Tateno, H., Nakamura-Tsuruta, S., and Hirabayashi, J. (2009) Comparative analysis of core-fucose-binding lectins from *Lens culinaris* and *Pisum sativum* using frontal affinity chromatography. *Glycobiology* **19**, 527–536
- Howard, I. K. (1971) Studies on a phytohemagglutinin from the lentil. II. Multiple forms of *Lens culinaris* hemagglutinin. *J. Biol. Chem.* **246**, 1590–1595
- Foersters, A., Lebrun, E., Van Rapenbusch, R., de Neve, R., and Strosberg, A. D. (1981) The structure of the lentil (*Lens culinaris*) lectin. Amino acid sequence determination and prediction of the secondary structure. *J. Biol. Chem.* **256**, 5550–5560
- Aoyagi, Y. (1995) Carbohydrate-based measurements on α -fetoprotein in the early diagnosis of hepatocellular carcinoma. *Glycoconj. J.* **12**, 194–199
- Ichikawa, E., Kuriyama, S., Yuji, J., Masaki, T., Uchida, N., Nishioka, M., and Taketa, K. (2006) Further resolution of α -fetoprotein glycoforms by two-dimensional isoelectric focusing and lectin affinity electrophoresis. *Electrophoresis* **27**, 3480–3487
- Taketa, K. (1990) α -Fetoprotein. Reevaluation in hepatology. *Hepatology* **12**, 1420–1432
- Debray, H., Decout, D., Strecker, G., Spik, G., and Montreuil, J. (1981) Specificity of twelve lectins toward oligosaccharides and glycopeptides related to N-glycosylproteins. *Eur. J. Biochem.* **117**, 41–55
- Amano, J., Osanai, M., Orita, T., Sugahara, D., and Osumi, K. (2009) Structural determination by negative-ion MALDI-QIT-TOF MSn after pyrene derivatization of variously fucosylated oligosaccharides with branched decaose cores from human milk. *Glycobiology* **19**, 601–614
- Harada, H., Kamei, M., Tokumoto, Y., Yui, S., Koyama, F., Kochibe, N., Endo, T., and Kobata, A. (1987) Systematic fractionation of oligosaccharides of human immunoglobulin G by serial affinity chromatography on immobilized lectin columns. *Anal. Biochem.* **164**, 374–381
- Matsumura, K., Higashida, K., Hata, Y., Kominami, J., Nakamura-Tsuruta, S., and Hirabayashi, J. (2009) Comparative analysis of oligosaccharide specificities of fucose-specific lectins from *Aspergillus oryzae* and *Aleuria aurantia* using frontal affinity chromatography. *Anal. Biochem.* **386**, 217–221
- Yamashita, K., Kochibe, N., Ohkura, T., Ueda, I., and Kobata, A. (1985) Fractionation of L-fucose-containing oligosaccharides on immobilized *Aleuria aurantia* lectin. *J. Biol. Chem.* **260**, 4688–4693
- Matsumoto, I., Uehara, Y., Jimbo, A., and Seno, N. (1983) Immunochemical and spectral studies on *Vicia faba* agglutinin. *J. Biochem.* **93**, 763–769
- Jordinson, M., El-Hariry, I., Calnan, D., Calam, J., and Pignatelli, M. (1999) *Vicia faba* agglutinin, the lectin present in broad beans, stimulates differentiation of undifferentiated colon cancer cells. *Gut* **44**, 709–714
- Allen, A. K., Desai, N. N., and Neuberger, A. (1976) Purification of the glycoprotein lectin from the broad bean (*Vicia faba*) and a comparison of its properties with lectins of similar specificity. *Biochem. J.* **155**, 127–135
- Matsumura, K., Higashida, K., Ishida, H., Hata, Y., Yamamoto, K., Shigeta, M., Mizuno-Horikawa, Y., Wang, X., Miyoshi, E., Gu, J., and Taniguchi, N. (2007) Carbohydrate binding specificity of a fucose-specific lectin from *Aspergillus oryzae*. A novel probe for core fucose. *J. Biol. Chem.* **282**, 15700–15708
- Mun, J. Y., Lee, K. J., Kim, Y. J., Kwon, O., Kim, S. J., Lee, S. G., Park, W. S., Heo, W. D., and Oh, D. B. (2012) Development of fluorescent probes for the detection of fucosylated N-glycans using an *Aspergillus oryzae* lectin. *Appl. Microbiol. Biotechnol.* **93**, 251–260
- Matsumoto, H., Shinzaki, S., Narisada, M., Kawamoto, S., Kuwamoto, K., Moriwaki, K., Kanke, F., Satomura, S., Kumada, T., and Miyoshi, E. (2010)

Core Fucose-specific Lectin from *P. squarrosa*

- Clinical application of a lectin antibody ELISA to measure fucosylated haptoglobin in sera of patients with pancreatic cancer. *Clin. Chim. Lab. Med.* **48**, 505–512
20. Kawagishi, H. (1995) Mushroom lectins. *Food Rev. Int.* **11**, 63–68
 21. Kobayashi, Y., Ishizaki, T., and Kawagishi, H. (2004) Screening for lectins in wild and cultivated mushrooms from Japan and their sugar binding specificities. *Int. J. Med. Mushr.* **6**, 113–125
 22. Laemmli, U. K. (1970) Cleavage of structural proteins during the assembly of the head of bacteriophage T4. *Nature* **227**, 680–685
 23. Kawagishi, H., Yamawaki, M., Isobe, S., Usui, T., Kimura, A., and Chiba, S. (1994) Two lectins from the marine sponge *Halichondria okadai*. An *N*-acetyl-sugar-specific lectin (HOL-I) and an *N*-acetylglucosamine-specific lectin (HOL-II). *J. Biol. Chem.* **269**, 1375–1379
 24. Kawagishi, H., and Mizuno, T. (1988) Purification and properties of a β -galactosyl-specific lectin from the fruiting bodies of *ischnoderma resinosus*. *FEBS Lett.* **227**, 99–102
 25. Kobayashi, Y., Kobayashi, K., Umehara, K., Dohra, H., Murata, T., Usui, T., and Kawagishi, H. (2004) Purification, characterization, and sugar binding specificity of an *N*-glycolylneuraminic acid-specific lectin from the mushroom *Chlorophyllum molybdites*. *J. Biol. Chem.* **279**, 53048–53055
 26. Horibe M, Kobayashi Y, Dohra H, Morita T, Murata T, Usui T, Nakamura-Tsuruta S, Kamei M, Hirabayashi J, Matsuura M, Yamada M, Saikawa Y, Hashimoto K, Nakata M, and Kawagishi, H. (2010) Toxic isolectins from the mushroom *Boletus venenatus*. *Phytochemistry* **71**, 648–657
 27. Hirabayashi, J., Arata, Y., and Kasai, K. (2000) Reinforcement of frontal affinity chromatography for effective analysis of lectin-oligosaccharide interactions. *J. Chromatogr. A.* **890**, 261–271
 28. Tateno, H., Nakamura-Tsuruta, S., and Hirabayashi, J. (2007) Frontal affinity chromatography. Sugar-protein interactions. *Nat. Protoc.* **2**, 2529–2537
 29. Nakamura-Tsuruta, S., Uchiyama, N., and Hirabayashi, J. (2006) High-throughput analysis of lectin-oligosaccharide interactions by automated frontal affinity chromatography. *Methods Enzymol.* **415**, 311–325
 30. Bradford, M. M. (1976) A rapid and sensitive method for the quantitation of microgram quantities of protein utilizing the principle of protein-dye binding. *Anal. Biochem.* **72**, 248–254
 31. Lundy, F. T., and Wisdom, G. B. (1999) An antibody-lectin sandwich assay for quantifying protein glycoforms. *Mol. Biotechnol.* **12**, 203–206
 32. Nakamura-Tsuruta, S., Kominami, J., Kamei, M., Koyama, Y., Suzuki, T., Isemura, M., and Hirabayashi, J. (2006) Comparative analysis by frontal affinity chromatography of oligosaccharide specificity of GlcNAc-binding lectins, *Griffonia simplicifolia* lectin-II (GSL-II) and *Boletopsis leucomelas* lectin (BLL). *J. Biochem.* **140**, 285–291
 33. Oda, Y., Senaha, T., Matsuno, Y., Nakajima, K., Naka, R., Kinoshita, M., Honda, E., Furuta, I., and Kakehi, K. (2003) A new fungal lectin recognizing α (1–6)-linked fucose in the *N*-glycan. *J. Biol. Chem.* **278**, 32439–32447
 34. Nakagawa, T., Miyoshi, E., Yakushijin, T., Hiramatsu, N., Igura, T., Hayashi, N., Taniguchi, N., and Kondo, A. (2008) Glycomic analysis of α -fetoprotein L3 in hepatoma cell lines and hepatocellular carcinoma patients. *J. Proteome Res.* **7**, 2222–2233
 35. Abelev, G. I., Perova, S. D., Khramkova, N. I., Postnikova, Z. A., and Irlin, I. S. (1963) Production of embryonal α -globulin by transplantable mouse hepatomas. *Transplantation* **1**, 174–180
 36. Morinaga, T., Sakai, M., Wegmann, T. G., and Tamaoki, T. (1983) Primary structures of human α -fetoprotein and its mRNA. *Proc. Natl. Acad. Sci. U.S.A.* **80**, 4604–4608
 37. Taketa, K., and Hirai, H. (1989) Lectin affinity electrophoresis of α -fetoprotein in cancer diagnosis. *Electrophoresis* **10**, 562–567
 38. Li, D., Mallory, T., and Satomura, S. (2001) AFP-L3. A new generation of tumor marker for hepatocellular carcinoma. *Clin. Chim. Acta* **313**, 15–19
 39. Yamagata, Y., Shimizu, K., Nakamura, K., Henmi, F., Satomura, S., Matsuura, S., and Tanaka, M. (2003) Simultaneous determination of percentage of *Lens culinaris* agglutinin-reactive α -fetoprotein and α -fetoprotein concentration using the LiBASys clinical auto-analyzer. *Clin. Chim. Acta* **327**, 59–67
 40. Sterling, R. K., Jeffers, L., Gordon, F., Sherman, M., Venook, A. P., Reddy, K. R., Satomura, S., and Schwartz, M. E. (2007) Clinical utility of AFP-L3% measurement in North American patients with HCV-related cirrhosis. *Am. J. Gastroenterol.* **102**, 2196–2205
 41. Kagebayashi, C., Yamaguchi, I., Akinaga, A., Kitano, H., Yokoyama, K., Satomura, M., Kurosawa, T., Watanabe, M., Kawabata, T., Chang, W., Li, C., Bousse, L., Wada, H. G., and Satomura, S. (2009) Automated immunoassay system for AFP-L3% using on-chip electrokinetic reaction and separation by affinity electrophoresis. *Anal. Biochem.* **388**, 306–311
 42. Tamura, Y., Igarashi, M., Kawai, H., Suda, T., Satomura, S., and Aoyagi, Y. (2010) Clinical advantage of highly sensitive on-chip immunoassay for fucosylated fraction of α -fetoprotein in patients with hepatocellular carcinoma. *Dig. Dis. Sci.* **55**, 3576–3583
 43. Morota, K., Nakagawa, M., Sekiya, R., Hemken, P. M., Sokoll, L. J., Elliott, D., Chan, D. W., and Dowell, B. L. (2011) A comparative evaluation of Golgi protein-73, fucosylated hemopexin, α -fetoprotein, and PIVKA-II in the serum of patients with chronic hepatitis, cirrhosis, and hepatocellular carcinoma. *Clin. Chem. Lab. Med.* **49**, 711–718
 44. Norton, P. A., Comunale, M. A., Krakover, J., Rodemich, L., Pirog, N., D'Amelio, A., Philip, R., Mehta, A. S., and Block, T. M. (2008) *N*-Linked glycosylation of the liver cancer biomarker GP73. *J. Cell. Biochem.* **104**, 136–149
 45. Wang, M., Long, R. E., Comunale, M. A., Junaidi, O., Marrero, J., Di Bisceglie, A. M., Block, T. M., and Mehta, A. S. (2009) Novel fucosylated biomarkers for the early detection of hepatocellular carcinoma. *Cancer Epidemiol. Biomarkers Prev.* **18**, 1914–1921
 46. Yamamoto, K., Imamura, H., Matsuyama, Y., Kume, Y., Ikeda, H., Norman, G. L., Shums, Z., Aoki, T., Hasegawa, K., Beck, Y., Sugawara, Y., and Kokudo, N. (2010) AFP, AFP-L3, DCP, and GP73 as markers for monitoring treatment response and recurrence and as surrogate markers of clinicopathological variables of HCC. *J. Gastroenterol.* **45**, 1272–1282
 47. Comunale, M. A., Rodemich-Betesh, L., Hafner, J., Wang, M., Norton, P., Di Bisceglie, A. M., Block, T., and Mehta, A. (2010) Linkage specific fucosylation of alpha-1-antitrypsin in liver cirrhosis and cancer patients. Implications for a biomarker of hepatocellular carcinoma. *PLoS One* **5**, 12419–12422
 48. Fukuda, T., Hashimoto, H., Okayasu, N., Kameyama, A., Onogi, H., Nakagawasa, O., Nakazawa, T., Kurosawa, T., Hao, Y., Isaji, T., Tadano, T., Narimatsu, H., Taniguchi, N., and Gu, J. (2011) α 1,6-Fucosyltransferase-deficient mice exhibit multiple behavioral abnormalities associated with a schizophrenia-like phenotype. Importance of the balance between the dopamine and serotonin systems. *J. Biol. Chem.* **286**, 18434–18443
 49. Wang, X., Inoue, S., Gu, J., Miyoshi, E., Noda, K., Li, W., Mizuno-Horikawa, Y., Nakano, M., Asahi, M., Takahashi, M., Uozumi, N., Ihara, S., Lee, S. H., Ikeda, Y., Yamaguchi, Y., Aze, Y., Tomiyama, Y., Fujii, J., Suzuki, K., Kondo, A., Shapiro, S. D., Lopez-Otin, C., Kuwaki, T., Okabe, M., Honke, K., and Taniguchi, N. (2005) Dysregulation of TGF- β 1 receptor activation leads to abnormal lung development and emphysema-like phenotype in core fucose-deficient mice. *Proc. Natl. Acad. Sci. U.S.A.* **102**, 15791–15796
 50. Moriwaki, K., Noda, K., Furukawa, Y., Ohshima, K., Uchiyama, A., Nakagawa, T., Taniguchi, N., Daigo, Y., Nakamura, Y., Hayashi, N., and Miyoshi, E. (2009) Deficiency of GMD5 leads to escape from NK cell-mediated tumor surveillance through modulation of TRAIL signaling. *Gastroenterology* **137**, 188–198
 51. Moriwaki, K., Shinzaki, S., and Miyoshi, E. (2011) GDP-mannose-4,6-dehydratase (GMD5) deficiency renders colon cancer cells resistant to tumor necrosis factor-related apoptosis-inducing ligand (TRAIL) receptor- and CD95-mediated apoptosis by inhibiting complex II formation. *J. Biol. Chem.* **286**, 43123–43133

SUPPLEMENTARY DATA

FIGURE S1: Schematic representation of the PA-oligosaccharides used for FAC analysis

Note that the reducing terminal is pyridylaminated for FAC analysis.

FIGURE S2: HPLC elution profile of PhoSL.

Column, TSK-gel G3000SWXL(7.8 × 300 mm); temperature, 25°C; solvent, 20 mM phosphate buffer (pH 7.4) containing 20% acetonitrile; flow rate, 0.5 ml/min; detection, 280 nm.

FIGURE S3: Comparison of the glycan-binding specificity of PhoSL and a synthetic peptide based on the PhoSL sequence determined by FAC analysis

A, Bar graphs representing the elution profiles of PhoSL in the presence of core-fucosylated *N*-glycans. The numbers at the bottom of the bar graphs correspond to the sugar numbers indicated in Figure S2.

B, Bar graphs representing the elution profiles of the synthetic PhoSL peptide. The numbers indicated in the elution profiles are retardation volumes ($V-V_0$, in ml).

FIGURE S4: Comparison of serum samples by LAE using purified AFP-L1, AFP-L3, and sera from patients with hepatocellular carcinoma (HCC)

Conventional lectin affinity electrophoresis (LAE) is shown for the sera of HCC patients, AFP-L3 (cell culture), and AFP-L1 (human cord serum). AFPs in the patient sera were analyzed for isoforms (glycosylation type) by LAE, as described previously. Briefly, 2 μ l of the serum samples (HCC1, 2, and 3), diluted to contain AFP at 100 ng/ml and AFP-L3 at 0, 20, or 100 ng/ml, were applied to an agarose gel containing LCA. Following electrophoresis, the AFP was transferred to a nitrocellulose membrane (ADVANTEC) pre-coated with monoclonal mouse antibody to human AFP (NB-011). The membrane was reacted first with rabbit immunoglobulins to AFP (DAKO A0008), and then with horseradish peroxidase-conjugated goat anti-rabbit IgG (BIO-RAD).

FIGURE S5: Staining intensities of PhoSL and AAL

Representative staining intensities of both PhoSL and AAA are shown. 0: negative staining, 1: low-intensity staining, 2: medial-intensity staining, 3: high-intensity staining.

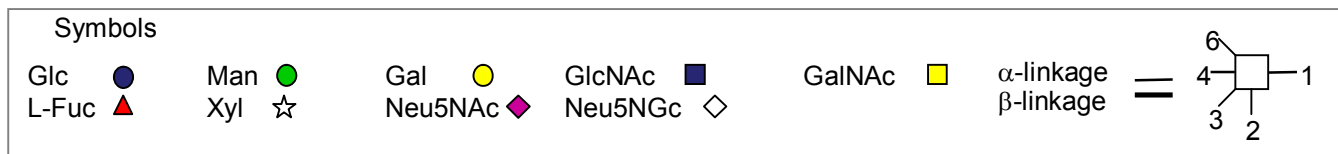
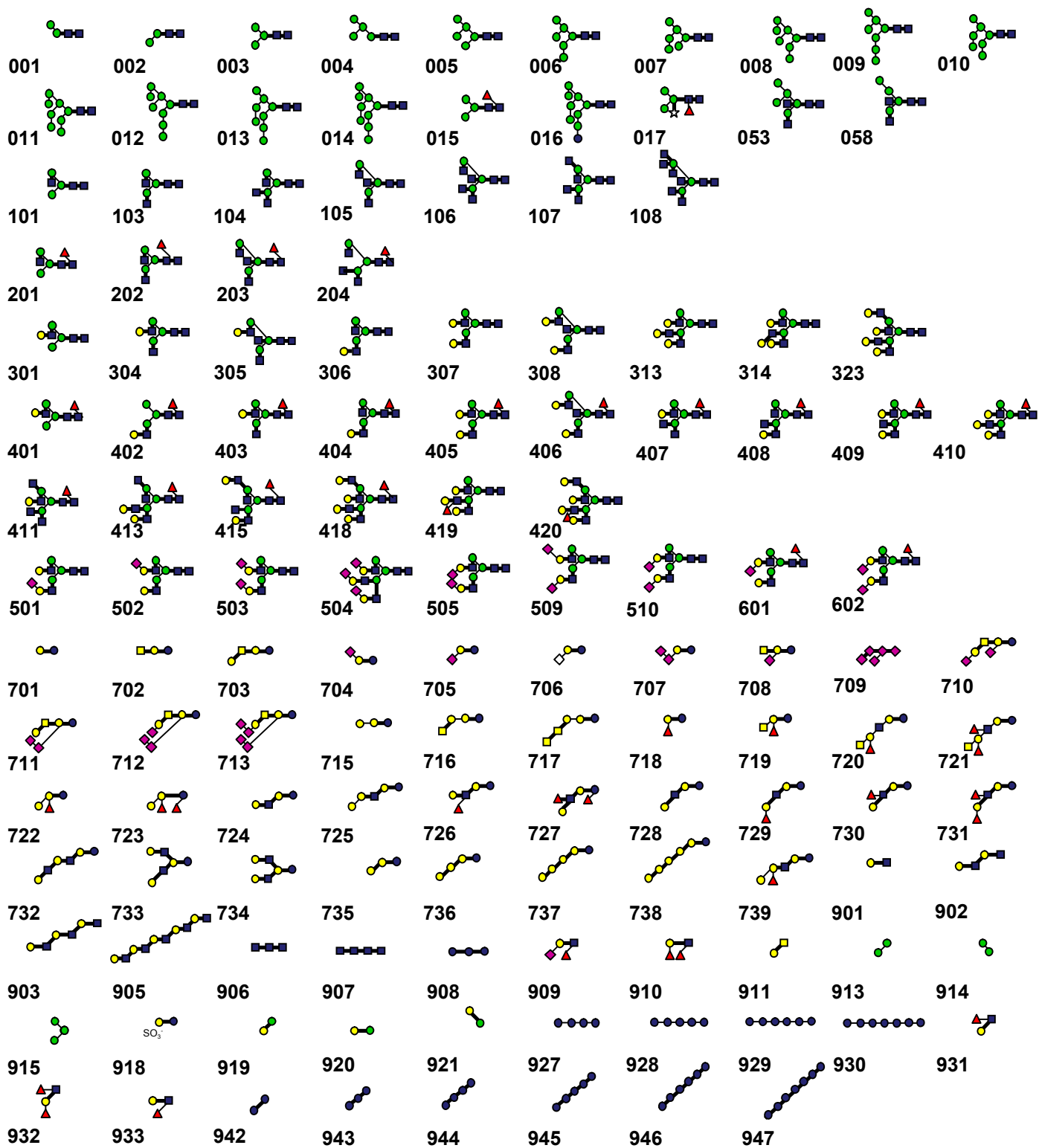


Fig. S1.

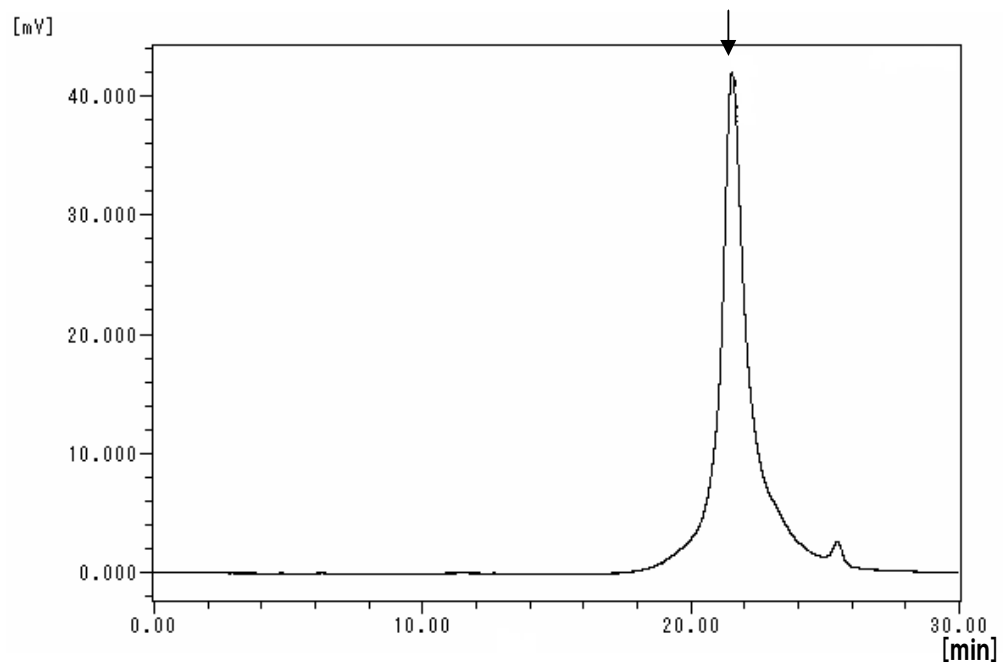
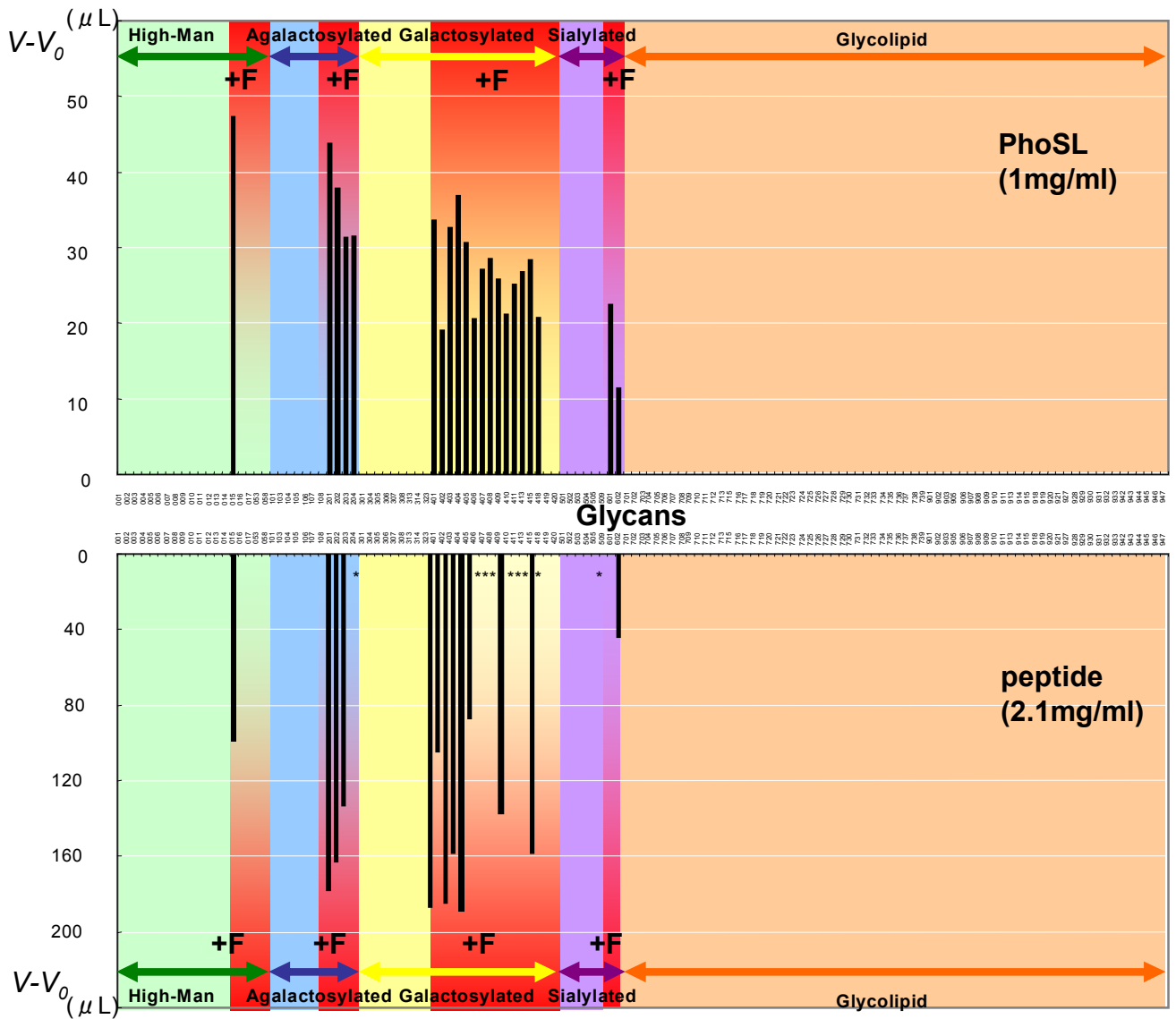


Fig. S2.



*not tested

Fig. S3.

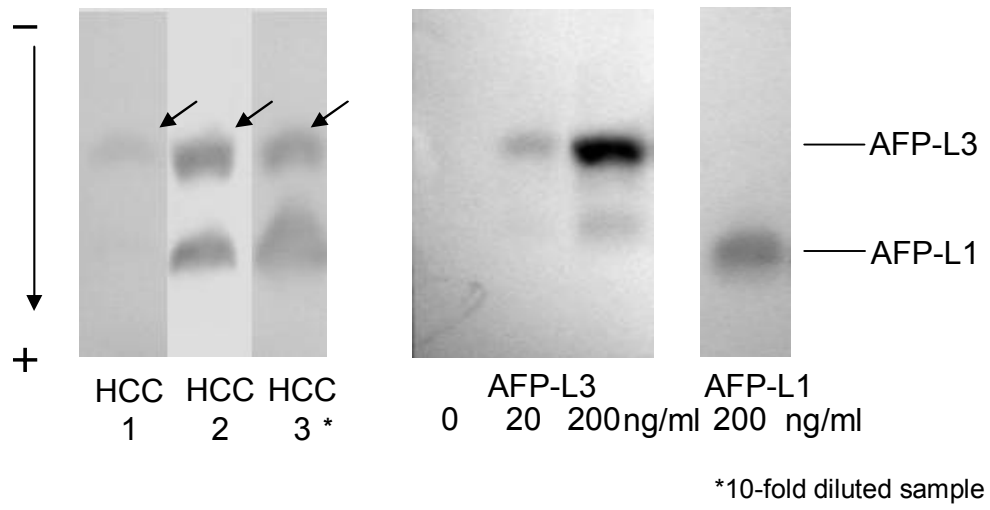


Fig. S4.

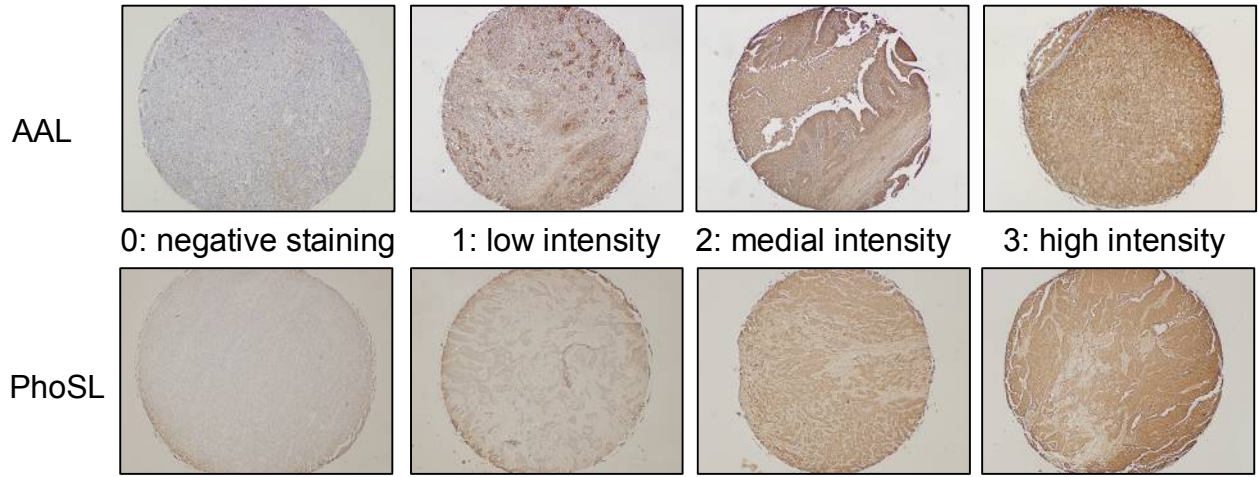


Fig. S5.

A Novel Core Fucose-specific Lectin from the Mushroom *Pholiota squarrosa*
Yuka Kobayashi, Hiroaki Tateno, Hideo Dohra, Kenta Moriwaki, Eiji Miyoshi, Jun
Hirabayashi and Hirokazu Kawagishi

J. Biol. Chem. 2012, 287:33973-33982.

doi: 10.1074/jbc.M111.327692 originally published online August 7, 2012

Access the most updated version of this article at doi: [10.1074/jbc.M111.327692](https://doi.org/10.1074/jbc.M111.327692)

Alerts:

- [When this article is cited](#)
- [When a correction for this article is posted](#)

[Click here](#) to choose from all of JBC's e-mail alerts

Supplemental material:

<http://www.jbc.org/content/suppl/2012/08/23/M111.327692.DC1.html>

This article cites 51 references, 20 of which can be accessed free at
<http://www.jbc.org/content/287/41/33973.full.html#ref-list-1>